

## - Reflections on ‘WASTE’

Nature does not have any waste, nor does it have discreet departments. Nature moves things around geographically in and out of its different systems.



- David Suzuki, environmentalist, says nothing leaves the planet. Whatever we produce, use or discard stays here somewhere. Our responsibility should not diminish because we are not directly aware of where our waste ends up.

# What is Waste?

- We have developed attitudes to waste expressed through our language, such as 'rubbish', 'refuse', 'garbage'.
- Because **we** decide what is waste, we literally make the waste.



The world cannot afford unchecked production of non-reusable resources because;-

- Production and distribution of goods requires energy which usually produces greenhouse gases
- There are limited resources available
- The waste created in both manufacturing/production and final disposal of the product uses valuable space and may be toxic to the environment

- A key component in our attitude is our feelings of connection to the waste 'journey'. When we discard something, we need to think about where it will go and ask whether that is the best or only possible destination.



- Our attitudes to waste are important as these determine how we will deal with the issue.



# History of waste

Pre-industrial	People left waste moved on	Degradable waste
Early 1900's	Mostly inert and degradable	Household tips
Mid-20 century	Consumerism-pollution & fires at tips	Council tips
1970's	Rising waste levels and toxicity	Regional landfills

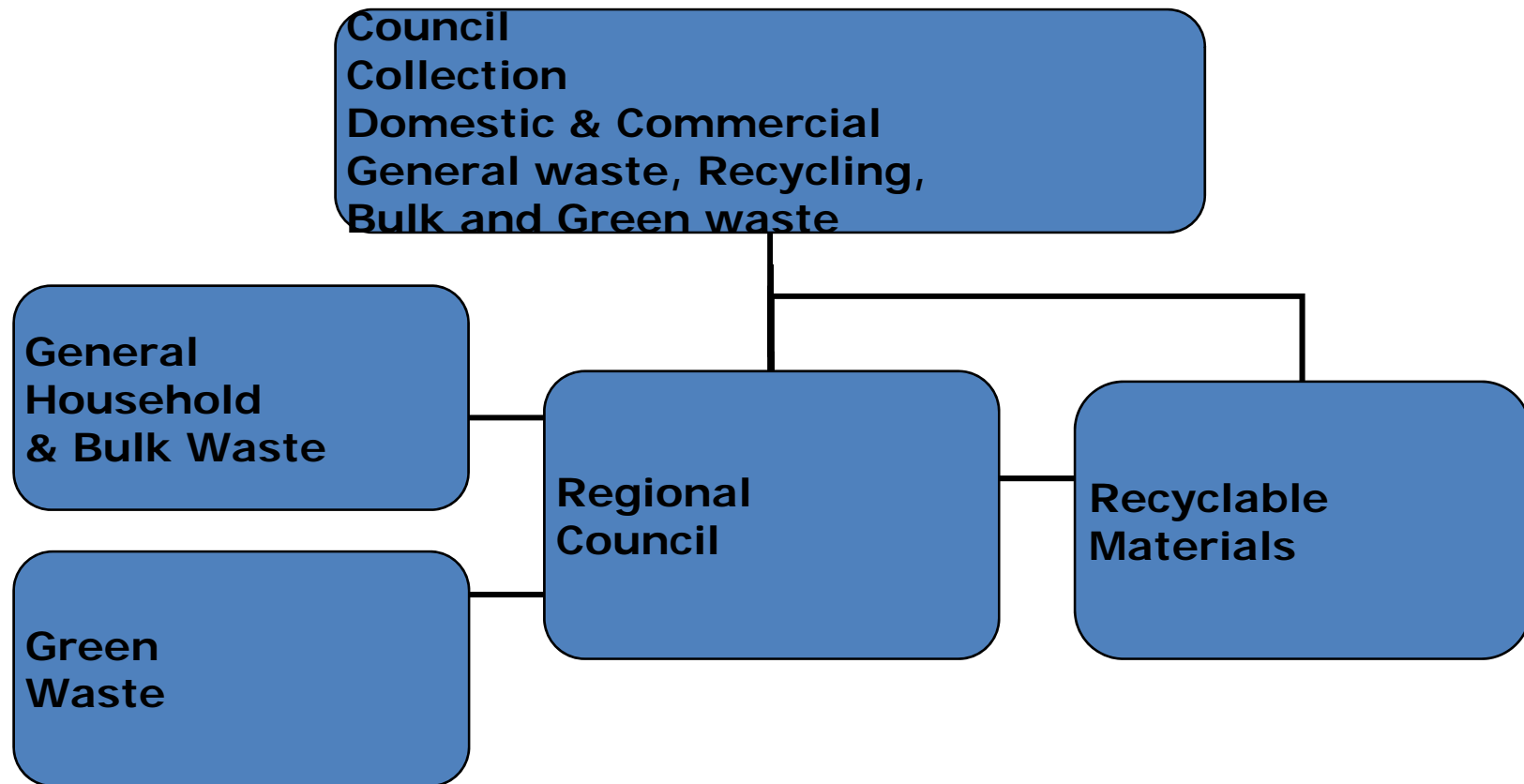




1980's    Big bins & burning bans    *CRISIS*  
create more organic waste

1990's    Opposition to new tips: 60%    Efforts to reduce waste  
reduction by 2000

# Municipal Waste Hierarchy



# Council Collections

## Residential – MGBs (Wheelie Bins)

- 120L Gen Weekly + 240L Rec Fortnightly
- 120L or 240L Gen Weekly + 240L Rec Fortnightly
- 240L Gen Weekly + 240L Rec Fortnightly
- 240L Gen Weekly + Crate Rec Fortnightly
- 80L, 120L or 240L Gen Weekly + 240L Rec weekly/Fortnightly
- 240L Gen & Rec Weekly

## Commercial

- 240L Gen Daily/Weekly
- 600L Gen Daily/Weekly
- 1100L Gen Daily/Weekly
- Cardboard Weekly/as required
- 240L Rec Weekly/Fortnightly



# Regional Councils

## Mindarie Regional Council

### Member Councils:

- Town of Cambridge
- City of Joondalup
- City of Perth
- City of Stirling
- Town of Victoria Park
- Town of Vincent
- City of Wanneroo



### Current Operation:

- Tamala Park Landfill facility – gas recovery
- Drop Off Recycling centre – shop, free firewood

### Future:

- Resource Recovery Plant
  - Aerobic Composting

## Western Metropolitan Regional Council

### Member Councils:

- Town of Mosman Park
- City of Subiaco
- Town of Cottesloe
- Town of Claremont
- Shire of Peppermint Grove



### Current Operation:

- Brockway Road Transfer Station
  - Silos transported to Red Hill landfill site
- Drop Off Recycling centre – transferred to MRF
- Green Waste – Processed on site and reused by others
- Recyclables, oil, tyres and eWaste to various MRFs

### Future:

- Resource Recovery Plant – Dicom vertical composting cylinders
  - Aerobic/Anaerobic Composting
  - Energy generation, pelletised compost
  - Materials Recovery Facility (MRF)





Anaeco Pty Ltd

## Eastern Metropolitan Regional Council

### Member Councils:

- Town of Bassendean
- City of Bayswater
- City of Belmont
- Shire of Kalamunda
- Shire of Mundaring
- City of Swan



### Current Operations:

- **Red Hill Landfill facility – gas recovery**
- **Drop Off Recycling centre**
- **Green Waste – Processed on site and reused by others**

### Future:

- **Researching alternative systems**

## Rivers Regional Council

### Member Councils:

- City of Gosnells
- City of South Perth
- City of Armadale
- City of Mandurah
- Shire of Murray
- Shire of Jarrahdale/Serpentine



### Current:

- **Armadale: Hopkinson Rd landfill site**
- **Gosnells: WA Landfill Services Land fill site in Cardup**
- **South Perth: SMRC Resource Recovery Centre in Canning Vale**
- **Recyclables to Cleanaway's MRF, Bayswater**

### Future:

- **Research into Resource Recovery Facility**

# Southern Metropolitan Regional Council

## Member Councils:

- City of Melville
- Town of East Fremantle
- City of Canning
- City of Cockburn
- Town of Kwinana
- City of Fremantle
- City of Rockingham



## Current Operations:

- **Resource Recovery Centre – Bedminster horizontal composting cylinder**
  - **Aerobic Composting → agriculture**
- **Materials Recovery Facility (MRF)**
  - **Separates dry recyclables, plastics, glass, paper & metals for Australian and Asian markets**
- **Green Waste – Processed and reused**
  - **Mulch for viticulture, gardens & road verges**





## Pilbara Regional council

### **Member Councils:**

- Town of Port Hedland
- Shire of Ashburton
- Shire of Roebourne
- Shire of East Pilbara

## Warren Blackwood Regional Waste Facility

### **Member Councils:**

- Shire of Donnybrook/Balingup
- Shire of Bridgetown/Greenbushes
- Shire of Manjimup

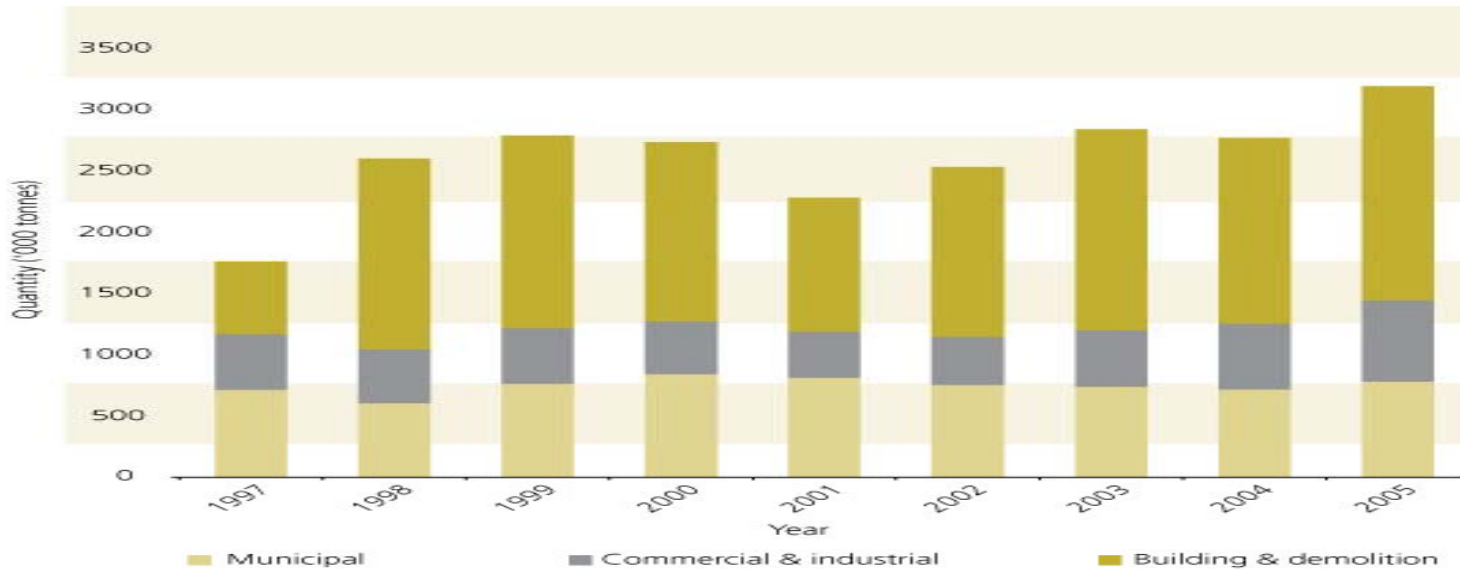
## Bunbury Harvey Regional Council

### **Member Councils:**

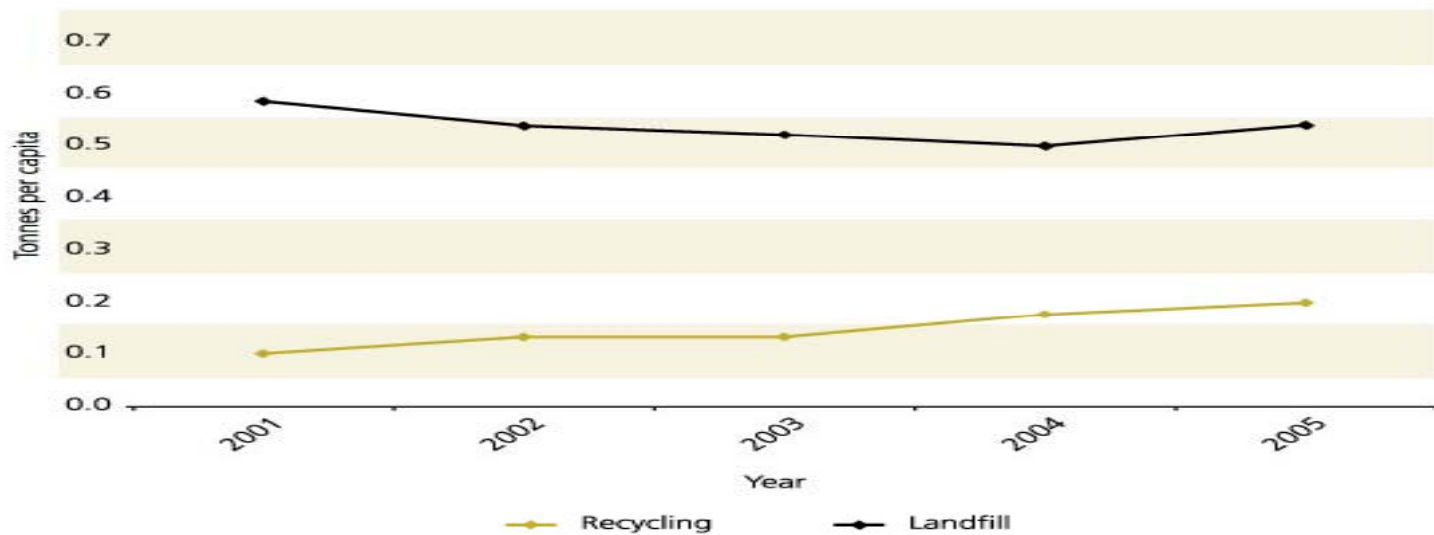
- City of Bunbury
- Shire of Harvey

### **Other**

- The Shire of Corrigin is working with the Shires of Kondinin, Kulin and Narembeen to establish a regional waste facility



**Solid Waste disposed of to landfill by waste stream for period 1997-2005**



**Municipal Waste disposed of to landfill and recycled per capita per year**



# Earth Carer Dynamo

