

Watch Your Waste!

Gabrielle Grime
Waste Education Coordinator,
Eastern Metropolitan Regional Council

Who are we?



- **Regional Council** (constituted under the Local Government Act 1995)
- Working on behalf of six member councils
- **Governed by a Council** (representatives from each member Council)

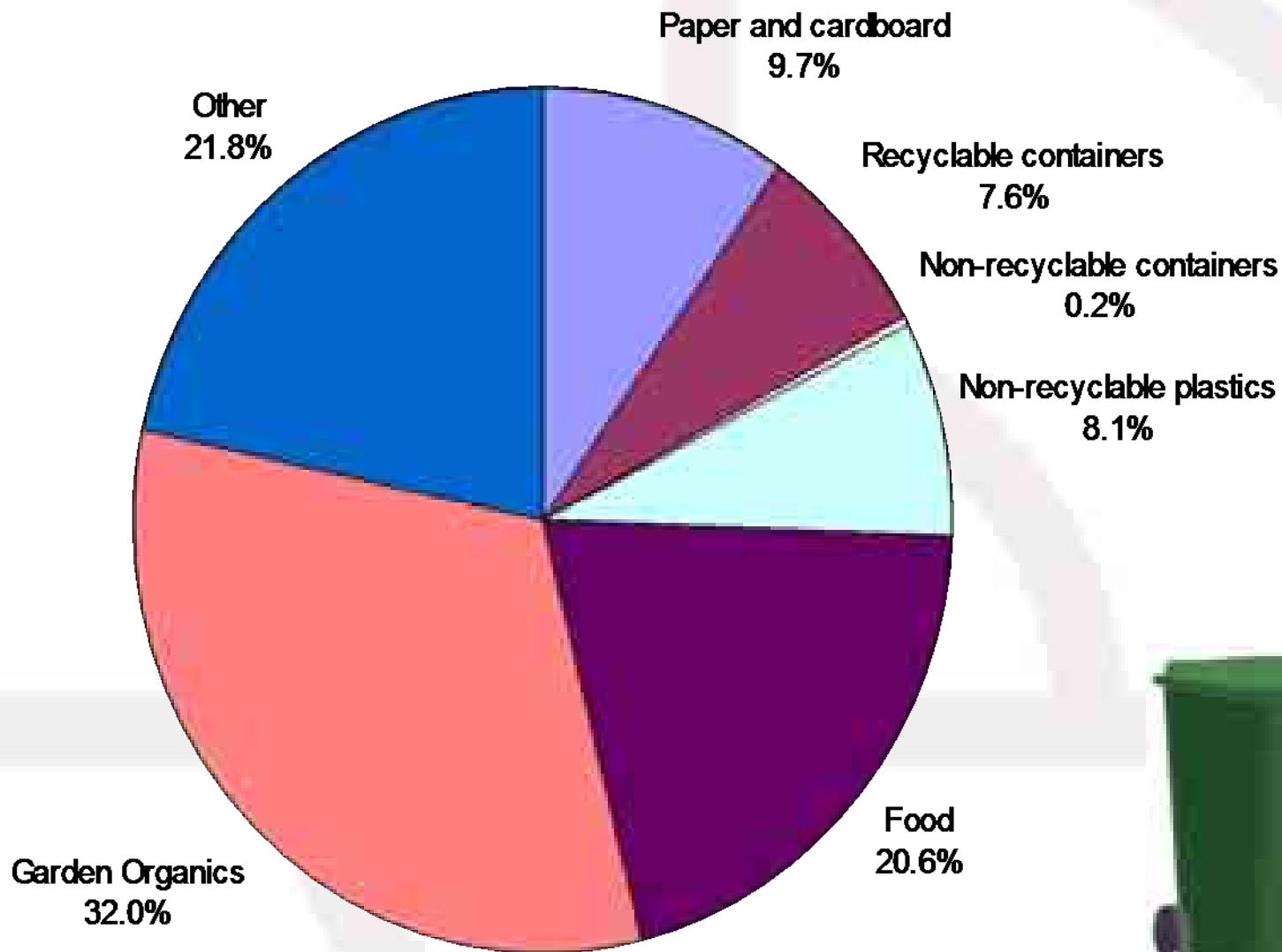




WASTE MANAGEMENT SERVICES



What goes into our green-top bin?



1 out of every **5** bags of groceries are put into the rubbish bin (average **145kg** of food per person is wasted a year) in Australia.



Australians generate about **690 kg of waste per year**, per person, making us the second highest generators of waste in the world behind the USA.

Shire of Kalamunda

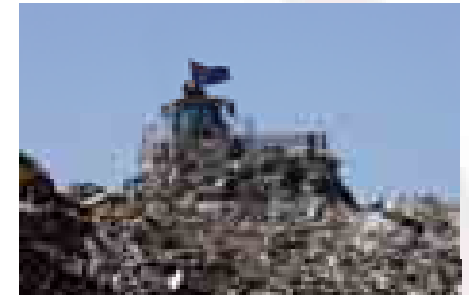


Collected by
Cleanaway,
transported
to Red Hill

Red Hill Waste Management
Facility

18,492 tonnes (2007-08)

0.97 tonnes per household/18.6kg per
week



Lawnbrook Rd
Transfer Station

General rubbish

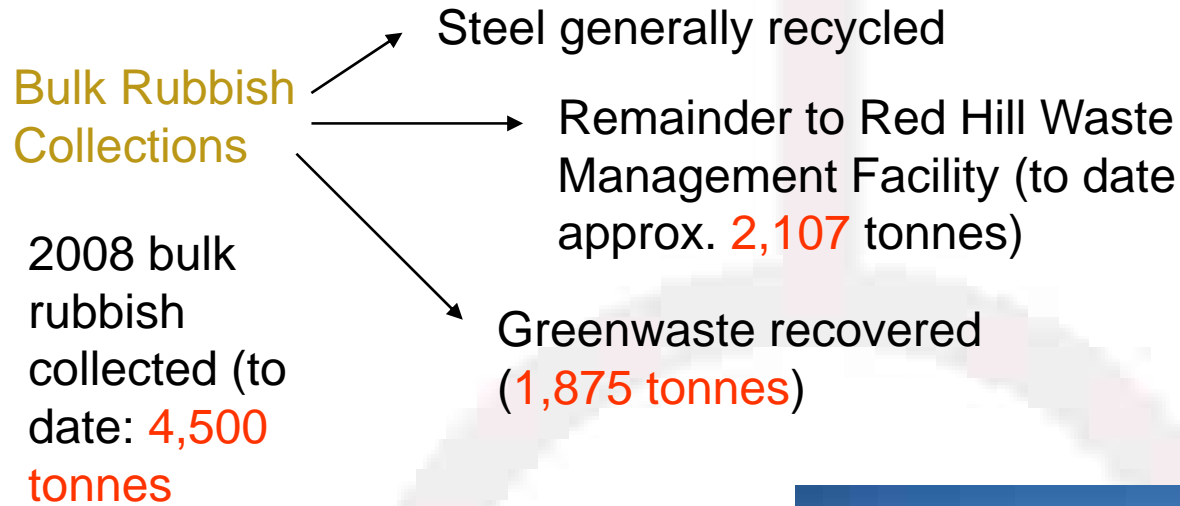
817 tonnes to
landfill

Recycling

Green waste and wood
Glass
Plastic
Cardboard and paper
Steel
Used oil
Fluorescent lights
Car batteries
Used clothing

300 tonnes recycled

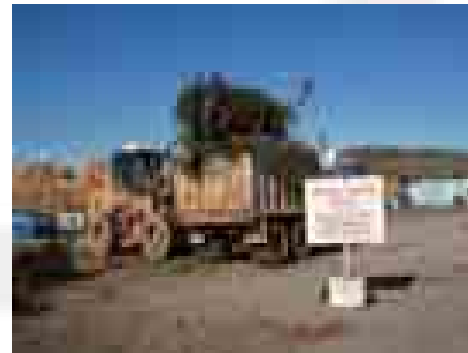
Shire of Kalamunda



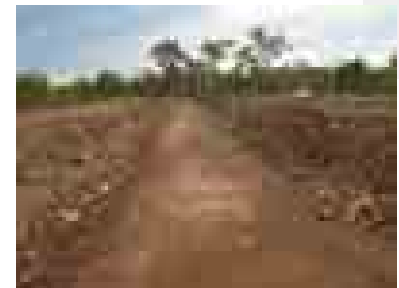
Greenwaste

(Kalamunda Waste Transfer Station; Bulk Rubbish Collection)

Collected by contractor, taken to Red Hill



Greenwaste is recovered: Shredded, screened, then used as soil conditioner and mulch



Shire of Kalamunda: Recycling



2007-2008: **3,527 tonnes**

Waste contractor: Transpacific Cleanaway

Materials Recycling Facility: Collier Rd

Averages out to **184 kg** a year per household, or **3.54 kg** per week.

1

material collection



2

sorting



3

steel removal



4

trommel sorting



5

screen sort



6

air separation



What can and can't be recycled?



Look in the '**Disposal Guide A-Z**'

Contact Cleanaway: 9449 3332

Which Plastics can be recycled?

Look for the recycling symbol on plastic containers

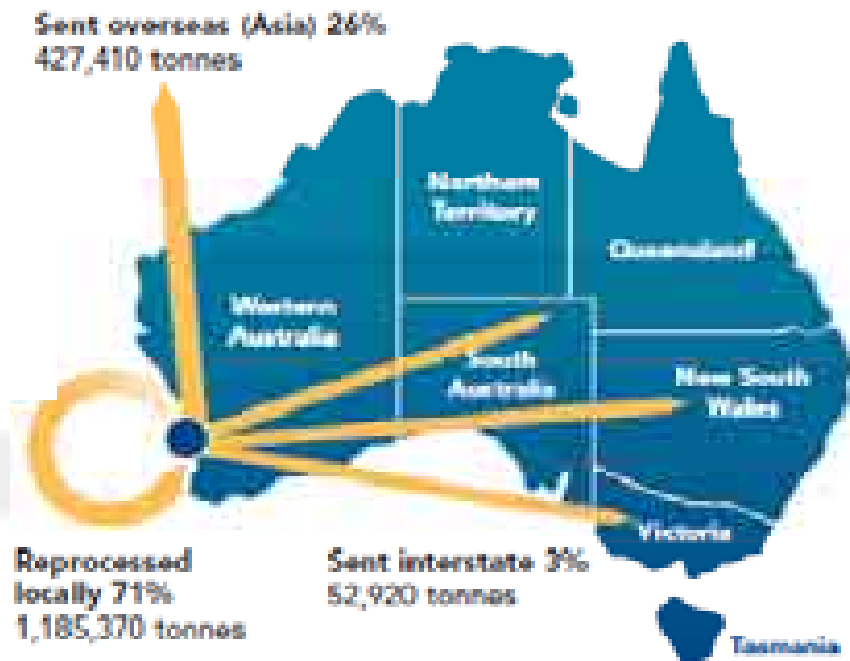


Major contaminants:

- Plastic bags
- Glass shards and non-bottle glass (e.g. window glass)
- Plastic wrap (e.g. glad wrap, bread bags) and non-recyclable plastics (e.g. polystyrene foam)

Where does my recycling go?

- Highly dependant on markets and available technologies – **recyclables are a commodity.**



Source: Review of Total Recycling Activity in Western Australia 2005/06 (2007)

In 2005-06, 71 per cent of recovered material remained in Western Australia for reprocessing (largely construction and demolition material and food and garden waste), and 26 per cent was sent overseas. 93 per cent of metal recovered in Western Australia is sent to Asia for reprocessing as well as a large amount of paper and plastics.

SERVICES WE PROVIDE FOR YOU

2008/2009 Waste & Recycling Guide



Shire of Kalamunda Waste & Recycling Guide 2008/2009

July 2008, August 2008, September 2008, October 2008, November 2008, December 2008, January 2009, February 2009, March 2009, April 2009, May 2009, June 2009

See One Recycling Week
 See Two Recycling Weeks
 Household Wasteline Waste Disposal Days
 No Bin Collection

Household Service Section: 0449 3332
 FOR LARGEST PRINT VERSION CALL: 0257 8899

What are my bins collected?
When are my bins collected?
Where can I take household hazardous waste (HHW)?
What items are disposed of through my bin?
How do I make the best use of my bin?

BIN COLLECTIONS
VERDE COLLECTIONS
HHW
DISPOSAL GUIDE &C
NO WASTE

For more info on your green bin collection...
 All items in your green bin are recycled...
 For more info on your green bin collection...

www.rgare.org.au

Waste Education – Recycle Household Batteries



Waste Education – Recycle CFLs



Fluorescent Light Recycling

Protecting Perth's Eastern Region

New Recycling Service for Perth's Eastern Region

Take your fluorescent light tubes and compact fluorescent lamps (CFLs) for recycling to any **participating business** (see list of participating business) or the **local council household recycling** (see list of councils).

Benefits of Recycling Fluorescents

- Prevents potential of mercury into the environment
- Recycling recovers the fluorescent light & transforming them into new products such as:

Steel	Blank used for home security cells	
Aluminum	Energy products	
Mercury	Medical supplies	
Phosphors	Paints	

Do not put fluorescent lights in your bin (household)

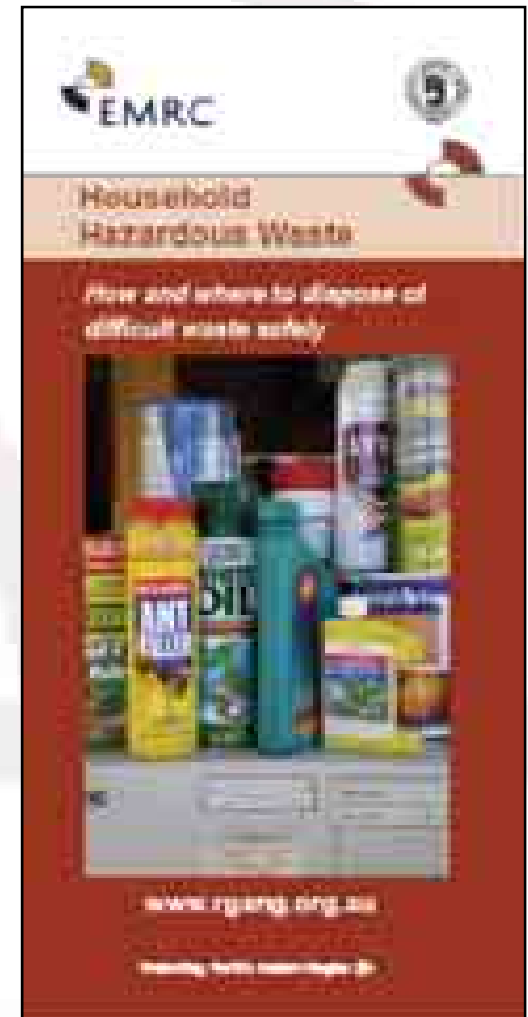
www.rgang.org.au

- Contains small amount of mercury
- Shire Office or HHW Day
- 95% of globe will be recycled

Household Hazardous Waste Disposal Days



- Held **monthly** throughout Perth's Eastern Region
- Advertised in your local community paper
- **Next: Bayswater** – Sat 19 January 2009



Watch Your Waste Column



- Community newspaper every 6 weeks
- Tours of Red Hill
- Great ideas on ways to reduce the amount of waste we create

Recycling at Events



WHAT CAN YOU DO TO REDUCE WASTE AT HOME ...and elsewhere?

“But the only possible guarantee of the future is responsible behaviour in the present”.

-Wendell Berry, “Living in the Future,”
The Unsettling of America, 1977

Whenever we shop,
we buy our rubbish.



Our **choices** in what we buy, eat or build can determine how much waste we generate - or avoid.

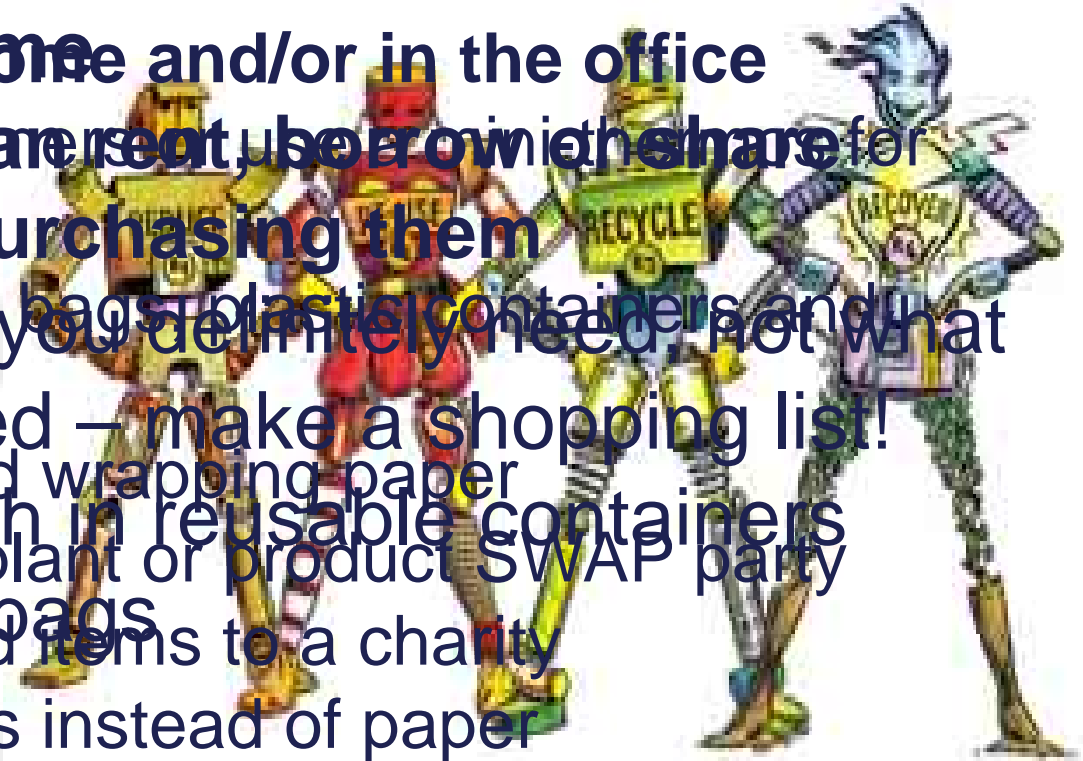
The Waste Matrix



AVOID

At home and/or in the office

- Refill your own water bottle rather than buying bottled water
- Re-use your own coffee cup rather than buying disposable cups
- Buy only what you definitely need, not what you might need – make a shopping list!
- Re-use cards and wrapping paper
- Pack your lunch in reusable containers
- Hold a clothing, plant or product SWAP party
- Use your own bags
- Donate unwanted items to a charity
- Buy in bulk
- Use cloth napkins instead of paper
- Buy items that will last longer
- Buy fruit and veg loose, not in bags



PERTH REGION NEEDS YOU
TO HELP US FIT THE WASTE.



Waste-watching tips at xmas



1. **“SNUB” - Say No to Unwanted Bags.** Try to take reusable shopping bags or a basket with you and decide whether or not you really need a new bag for every purchase.
2. Compost vegetable peelings and food scraps except meat, seafood and dairy products.
3. Try to buy Christmas decorations that can be used for several years.
4. Close the loop – buy recycled Christmas cards, wrapping paper, tags, diaries and calendars.
5. Avoid buying presents with excess packaging.
6. Make your own cards and presents if possible with reusable materials.
7. When shopping, make a list! Don't buy unwanted presents! If you receive a present that you don't like, why not give it to the charity shop and give someone else a chance to enjoy it.
8. Email electronic Christmas cards – saving money, paper and the environment.
9. Don't waste paper – wrap creatively! Use tea towels, cloth, wool, ribbon, reusable bags or Christmas stockings.
10. Give experiences, rather than gifts.

Your personalised **No Waste Kit**



- What could you take with you to reduce or avoid waste out of home? (E.g. Shopping, outdoor activities, events, work...)
- What might be some barriers to having this type of kit and how could you overcome them?

"The world is not ours, the earth is not ours, it's a treasure we hold in trust for future generations."

- African proverb